

# monkey Fist



PASSION. INNOVATION. EXCELLENCE





# monkey Fist

The Monkey Fist is a new patented device designed and engineered for quickly removing pre-sawn concrete slabs without using a breaker or jack hammer. Designed to quickly remove sections of concrete bridge decks, repair road beds or renovate floor space in buildings. The Monkey Fist is similar to a wedge anchor, but is reusable!

Monkey Fist has a Safe Working Load of 2, 948 Kg. Depending on the application, one, two or more anchors can be used. Simply core drill a 52mm (2") hole in or near the centre of the piece to be removed, insert the Monkey Fist and lift the slab out. To recover the Monkey Fist, just lift the release handle, remove and reuse.

## Benefits of using the Monkey Fist

**Time :** Sawing out sections of concrete and lifting out slabs can take days off of a large project but when it comes to time management, The Monkey Fist surpasses any other common method of removing concrete.

**Safety :** The Monkey Fist is not only a cheap way to remove concrete, it is the safest way to remove concrete. If you work in the cutting industry you've probably seen some gnarly rigging that can make a situation very sticky. Getting skid steer forks underneath often makes concrete unstable and susceptible to falling on someone or something. If you have a good hole drilled, The Monkey Fist will have a solid grip allowing the user to lift straight up in the air and to it's destination.

**It's Easy :** Saw slab sections into manageable pieces, Core drill a 52 mm (2") hole, Insert The Monkey Fist and Lift. It's that easy.

SPECIFICATIONS	
DIAMETER	Ø 50.8 mm
EXPANDED DIAMETER	Ø 54 mm
HEIGHT	203 mm
MATERIAL	Heat Treated Steel
WORKING LOAD LIMIT	2, 948 Kg
WEIGHT	4.5 Kg



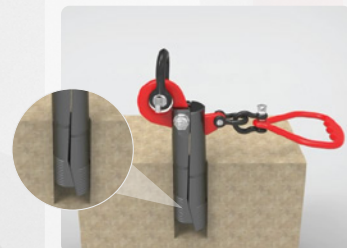
## EASY TO USE



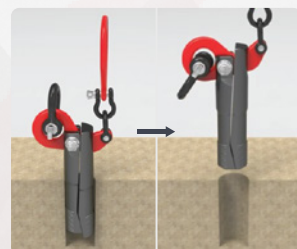
Saw concrete into manageable sized slabs up to 2, 948 Kg per device.



Insert the Monkey Fist into a 52 mm core drilled hole centred on the slab to be removed.



Apply force to the lifting ring, the cam will slide the mandrel causing it to expand and grip the concrete to pick up the slab



When finished, pull up release lever to easily remove the Monkey Fist from the slab

## TRAXX CONSTRUCTION PRODUCTS

Unit 4/1 Rocklea Drive, Port Melbourne, Victoria, Australia 3207

Phone: 1300 109 108 | Telephone: +61 (0)3 9646 9200 |

Email: info@traxxcp.com.au | Website: www.traxxcp.com.au

