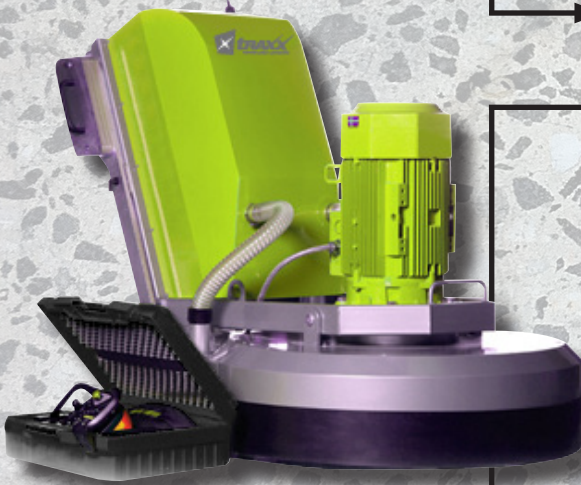


### 1. Assess hardness of Concrete

Soft, Medium or Hard, and select required metal bond diamond.

### 2. Grinding with TraxxLok Metal Bond segments:

Note: Depending on surface condition and concrete hardness / makeup, some mesh sizes may be able to be skipped.



a. 16 mesh (if removing glue or in extreme cases)

b. 40 mesh

c. 80 mesh

Use CFQ with 11ltr pump – mix 40:1 / 250ml per 10 ltr.

d. If floor is to be polished - Clean floor with Vacuum and then wash with Microfibre mop.

e. 120 mesh

- Use with TraxxGrout or TraxxGrout-Plus to fill in any exposed holes.
- If concrete hardness is greater than 25mpa use TraxxGrout, if hardness less than 25mpa (softer) use TraxxGrout-Plus.
- Apply with broom/microfiber/spray water on the floor 250ml per 5ltr recommended
- Bring to a paste to ensure the best chance of ingress into the exposed holes.
- Ensure to remove all excess Grout, including around edges, before drying.
- Allow Grout to dry for approx 2-3 hours. Ensure no scratching.

f. 200 mesh

- Use with TraxxGrout or TraxxGrout-Plus instead of 120 mesh if required and should the process need.

### 3. Remove ALL excess dust using a Microfibre Mop – dry.

### 4. Wet Mop floor with Microfibre Mop to remove any stubborn debris.

### 5. Apply TraxxHard to increase the density of the concrete allowing for a higher gloss finish once polished.

- 1ltr per 10m<sup>2</sup>.
- Up to 2 applications.
- Apply with microfibre mop insuring not to pool or leave over laps.
- Allow to cure for 12 hours.



# TraxxFloor

Step by Step Guide to polished concrete floors continued.....



## 6. Resin Polish with Traxx Diamond Resin Pads:

### a. 50 grit

- Polish a small area and check for scratches.
- If scratches are present, use a 50 grit Hi-Con resin pad.
- Should scratches still be present after using the 50 grit Hi-Con pad, go back to the last metal bond used and follow through the process again.

### b. Dry Mop floor with Microfibre Mop (between each resin)

### d. 100 grit

### e. 200 grit

### f. 400 grit

For semi-gloss floor, stop after 400 or 800 grit resin depending on concrete and desired finish.

### g. 800 grit

### h. 1500 grit

### i. 3000 grit

## 7. Clean floor thoroughly – Dry Mop floor with Microfibre Mop.

## 8. Clean floor thoroughly – Wet Mop floor with Microfibre Mop to remove any stubborn debris.

## 9. Sealing with TraxxSeal:

- Domestic applications use TraxxSeal.
- High Traffic / Commercial applications use TraxxSeal-Plus and for an enhanced gloss.
- 2-3 applications using Microfibre applicator.
- Once dry re-apply.
- Allow 6-12 hours to dry.

## 10. Buff floor with Traxx Scan Combi Clean.

### TraxxFloor Products listed:

1. TraxxLok Metal Bond segments – 16 mesh to 200 mesh
2. CFQ Diamond Lubricant & 11ltr Pump
3. TraxxGrout, TraxxGrout-Plus
4. TraxxHard
5. Traxx Diamond Resin Pads – 50 grit to 3000 grit
6. TraxxSeal, TraxxSeal-Plus
7. Traxx Scan Combi Clean



Traxx Construction Products  
1300 109 108  
[www.traxxcp.com.au](http://www.traxxcp.com.au)



# TraxxFloor

Quick reference to polished concrete floors.

**Step 1: Assess hardness of Concrete.**

**Step 2: a. Grind with TraxxLok Metal Bond segments:**  
16 mesh, 40 mesh, 80 mesh - use with CFQ

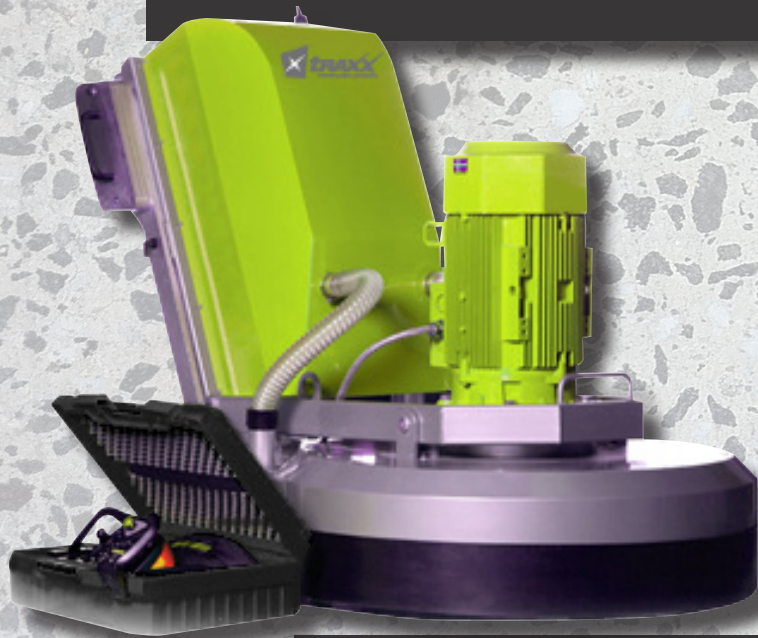
b. 120 mesh, 200 mesh - use with TraxxGrout

**Step 3: Apply TraxxHard to increase the density of the concrete allowing for a higher gloss finish once polished.**

**Step 4: Resin Polish with Traxx Diamond Resin Pads:**  
50 grit, 100 grit, 200 grit, 400 grit, 800 grit, 1500 grit, 3000 grit

**Step 5: Seal with TraxxSeal.**

**Step 6: Buff floor with Traxx Scan Combi Clean.**



**TraxxFloor Products used:**

1. TraxxLok Metal Bond segments – 16 mesh to 200 mesh
2. CFQ Diamond Lubricant & 11ltr Pump
3. TraxxGrout, TraxxGrout-Plus
4. TraxxHard
5. Traxx Diamond Resin Pads – 50 grit to 3000 grit
6. TraxxSeal, TraxxSeal-Plus
7. Traxx Scan Combi Clean