



Unit 4/1 Rocklea Drive
Port Melbourne Vic 3207

1300 109 108

www.traxxcp.com.au



SC250X FLOOR GRINDER

OPERATIONS MANUAL

The contents of this Operations Manual are the copyright of the publisher and may not be reproduced (even extract) unless permission is granted. Traxx Construction Products has composed this manual with accuracy. However, mistakes may occur or articles may be changed. Traxx Construction Products is not responsible for mistakes or deviations of figures, graphics or any other information found in this instruction manual.

- 1. CONTENTS2
- 2. INTRODUCTION & DESCRIPTION3
- 3. TECHNICAL DATA3
- 4. OPERATION4
- 5. SAFETY PRECAUTIONS4
- 6. FAULT DIAGNOSIS5
- 7. MAINTENANCE5
- 8. PARTS DIAGRAM6
- 9. PARTS LIST7

1. INTRODUCTION AND DESCRIPTION

This manual is intended to provide operation and service information necessary for the safe and efficient use of the Floor Grinder.

Operating or servicing the unit other than in accordance with the instructions given may subject the machine to conditions beyond its capability, which may result in machine failure or personal injury.

IMPORTANT

- 1. Read the entire operating manual carefully before attempting to use the floor grinder. Special attention should be paid to the section entitled 'Safety Precautions'.**

The Floor Grinder is a sturdy, reliable and easy to use machine.

The Floor Grinder is fitted with 2.2kW single phase motor. This motor offers a direct drive to the grinding plate with the incorporation of a flexible coupling between the motor and the plate.

The shroud system is unique in design, automatically adjusting to suit segment height and floor angle. This shroud system, when used in conjunction with an appropriate industrial vacuum unit, eliminates dust loss during grinding. The shroud has 2 removable sections to enable the operator to grind close up to the wall etc. Please note that dust loss is possible when this section is removed.

The floor grinder comes complete with a water connection for wet grinding should this be required. This incorporates a ball valve allowing the operator to regulate the water supply to obtain the best grinding results.

The floor grinder has a foldable handle which enables it to be easily transported in the trunk of most small vehicles. The rear wheels can also be extended outward should the operator want more stability from the grinder. This requires the use of a 10mm wrench. The operator can also raise or lower the height of the handle to maximize their comfort when using the grinder.

And the new designed lifter system makes operator handy to use.

2. TECHNICAL DATA

Motor HP	3hp
Motor KW Rating	2.2kW
Motor RPM	1410rpm
Unit Weight	48kg
Plate Type Standard	250mm plate or Cub Shoe
Plate Bolt Types	M12 x 25 Countersunk socket head
Main Construction	Powder Coated Steel

Ensure all re-tipped and new grinding plates are properly balanced.

3. OPERATION

The floor grinder is designed to be used either wet or dry. If the floor is being ground dry, ensure a suitable industrial vacuum is connected and that operator is wearing suitable breathing respiratory equipment. Contact your local work place health authority to ensure that their requirements regarding respiratory equipment are being met.

Starting the Grinder

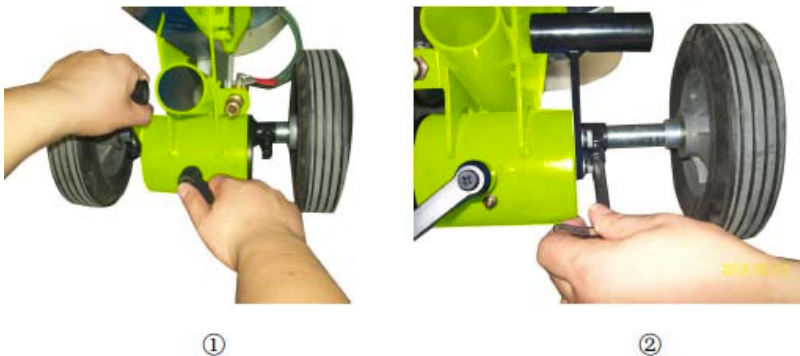
1. Check the grinding plate being used is suitable for the material being ground AND THAT THEY ARE CORRECTLY BALANCED.
2. Check that the grinding plates being used are in good order and properly attached, with all countersunk bolts firmly in place. Check this occasionally during use, as they can work loose during operation.
3. Check that the grinding plate is adjusted so that it sits level on the ground.
4. Check that all nuts and bolts on the folding handle latch are tight and firm.
5. Raise the grinding plates from the floor.
6. Start the motor by pressing the black switch on the starter box.
7. Lower the grinding plate and commence grinding.

Stopping the Grinder

1. Press the red stop button on the starter box.

Note:

1. By turning and pushing the handles, you can fix vertical grinding position (photo 1).
2. You can adjust the axle's width for your need (photo 2).



4. SAFETY PRECAUTIONS

The Floor Grinder has been designed to minimize noise and vibration levels and to provide maximum operator safety. However, incorrect use of the grinder may cause serious injury and therefore the following precautions must be taken:

1. Do not use the grinder for longer than prescribed in your local environmental working regulations, as the noise load from extensive daily use may result in hearing defects.
2. Always use protective earplugs or earmuffs, goggles, gloves and correct footwear.
3. Do not modify the grinder in any manner, or use a machine that has been modified by anyone other than the manufacturer or authorised dealer.
4. Do not add weight to the machine to make the grinder work harder. Instead reduce the number of segments on the grinding plate to increase performance.
5. Be sure that re-tipped and new grinding plates are properly balanced.
6. Do not run the grinder with grinding head raised any higher than necessary, i.e tipped back on handle.
7. Always be sure that folding handle latch is secure and has not vibrated loose after use.
8. When grinding, the machine is exposed to high vibration. Occasionally check machine for bolts/nuts which may have vibrated loose.
9. Do not allow water or cotton to enter the interior of the motor.

5. FAULT DIAGNOSIS

Symptom	Possible Cause	Action
Grinder runs for 5-15 minutes, then stops	The current screw is not adjustable	Adjust the current screw to the suitable area
	Extension cable too long and/or not made from heavy enough cable	Get electrician to check extension lead compatibility
Grinder runs but does not perform adequately	Motor defective	Repair or replace
Grinder vibrates during use	Grinding plates not correctly placed	Replace or re-balance grinding plates
Grinding noise coming from grinding head when up on jockey wheel	Excessively worn motor bearings	Have motor serviced

6. MAINTENANCE

Daily cleaning: The motor in use should always be kept clean. No water drops, cotton etc should be allowed to get into the interior of the motors.

Check on load current: While the motor is in operation, constant care should be taken to keep the load current below the rated value.

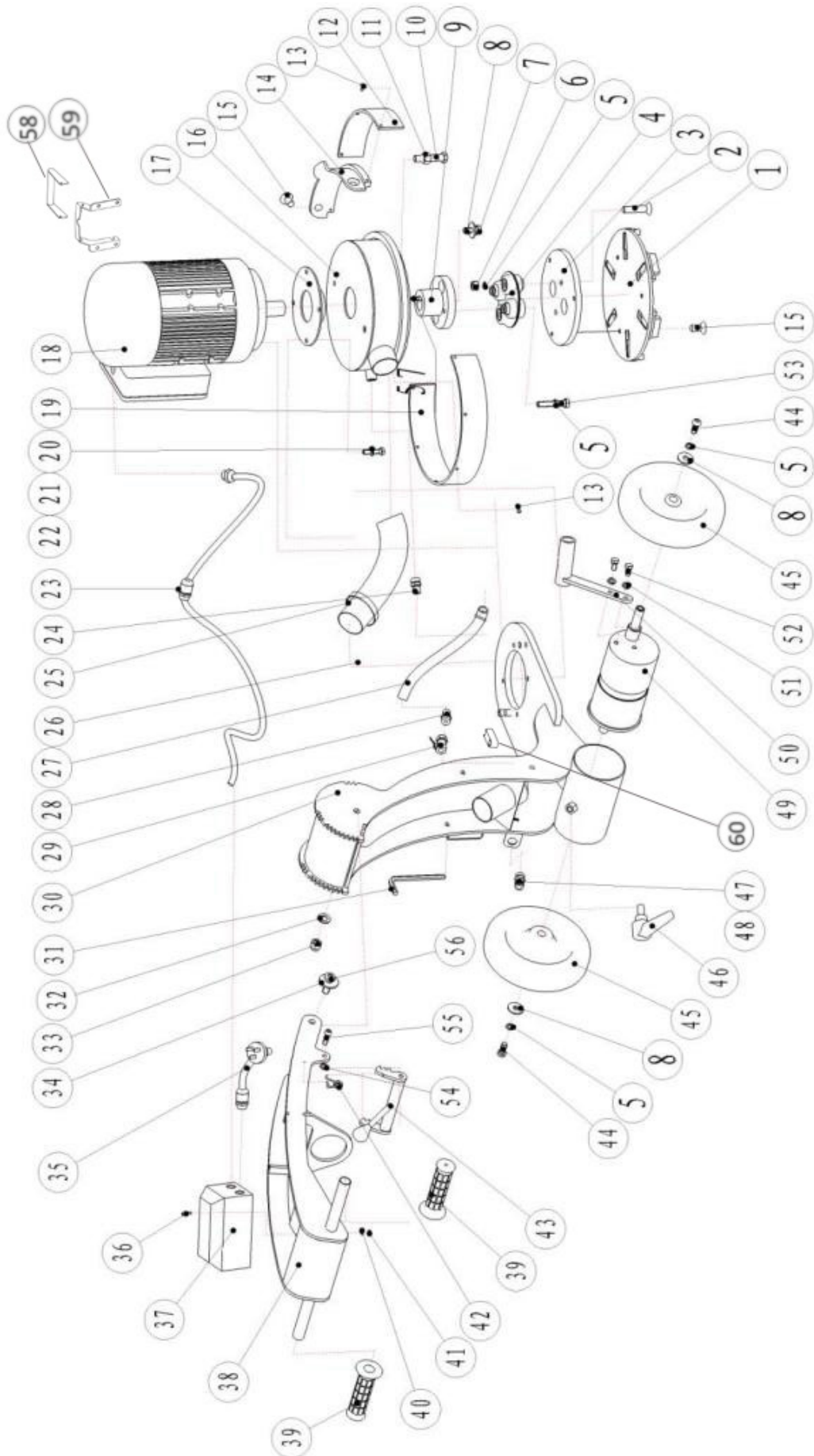
Operational sounds: During operation of the motor there must be no rubbing sounds, shrieks or other random noises. Stop the motor immediately and restart after inspection and corrections have been made.

Check folding handle latch periodically. This is adjustable.

To adjust, loosen adjusting handle and adjust handle height until a satisfactory tension has been achieved.

The wheel bearings use sealed bearings and require no regular greasing.

7. PARTS DIAGRAM



8. PARTS LIST

Item No.	Part No.	Description	Qty
1	100663	Millstones	1
2	100279	hexagon socket countersunk head cap head screw	2
3	100664	Dowel disc	1
4	100272	flex coupling	1
5	100253	Spring lock washers	4
6	100275	hexagon nut	2
7	100274	Hexagon head bolts	1
8	100266	Big plain washers	3
9	100276	driving sleeve	1
10	100277	Hexagon head bolts	2
11	100210	hexagon nut M12	2
12	100207	shroud plastic wear strip set	1
13	100206	Hexagon socket button head screws	9
14	100208	Detachable shroud	1
15	100665	hexagon socket countersunk head cap head screw,M8x16	5
16	100270	Enclosure	1
17	100211	location Case	1
18	100216	electrical motor	1
19	100269	shroud plastic wear strip set	1
20	100109	washer 8-2/2	4
21	100086	spring washer 8-6/2	4
22	100268	Hexagon head bolts	4
23	100066	cable tie-in	2
24	100267	pipe joint	1
25	100222	flexible conduit L=480	1
26	100263	big clip	2
27	100222	flexible conduit L=245	1
	100264	small clip	2
28	100249	crossover coupling	1
29	100249	crossover coupling	1
30	100666	Frame body part	1
31	100245	Inner hexagon spanner	1
32	100307	flat washer 12	2
33	100667	Hexagon jam nuts	2
34	100668	Big plain washers	2
35	100669	power cord	1
36	100670	Cross recessed pan head screw M4X16	3
37	100223	breaker,GV2-ME16C	1
	100224	breaker crust,GV2-MC02	1
	100225	UVT assemble	1
38	100671	Upper arm	1
39	100217	Grip	2
40	100672	Plain washers	3
41	100673	hex. Lock nut M4	3
42	100674	lock twist spring	2
43	100675	Positioning clamping claw buckle	1
	100676	Adjustale handle M10x25	1
44	100252	Hexagon socket button head screws head screws	2
45	100251	Wheel	2
46	100250	adjustale handle M12*25	1
47	100246	quick joint	1
48	100247	o-ring	1
49	100678	Eccentric shaft	1
50	100679	lift lever	1
51	100654	spring washer	2
52	100262	hexagon bolt	2
53	100273	Hexagon head bolts	2
54	100303	flat washer 8	2
55	100680	Hexagon socket button head screws	2
56	100681	hex flat round head screws	2
57	100271	Key	2
58	100041	Front Handle	1
59	100042	Handle holder	1
60	100651	Level bubble	1



**Unit 4/1 Rocklea Drive
Port Melbourne Vic 3207**

1300 109 108

www.traxxcp.com.au